

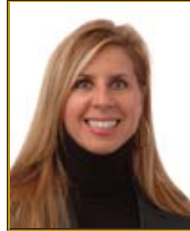


### Corporate & Continuing Education

#### Administration



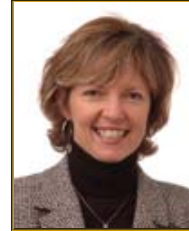
**Janis Miller**  
Dean, Corporate &  
Continuing Education



**Joanne Cerant**  
Account Manager



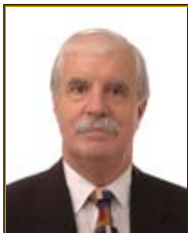
**Nadia Desjardins**  
Account Manager



**Carolynne Fletcher**  
Director, Corporate  
Education Centre



**Andy Hertel**  
Manager, Motorcycle  
Program



**Allan  
(Ted) Patterson**  
Director,  
Centre/Employee  
Benefits



**A  
Edwin Sielmanowicz**  
Manager,  
Financial/Information  
Systems



**Teresa Sottile**  
Program Manager



**Karen Tavener**  
Director, Transportation  
Training Centre

### Corporate & Continuing Education

#### Support



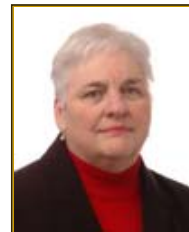
**Linda Azzopardi**  
Project Coordinator



**Anna Borg**  
Administrative Co-  
ordinator



**Paul F. Cassidy**  
Operations Coordinator



**Maureen Cromarty**  
Project Coordinator



**Helen Gawryk**  
Program Coordinator



**James Jack**  
Technologist



**Gayle Kennedy**  
Secretary



**Nancy Kerry**  
Coordinator, Centre/Emp  
Benefits



**Rick Mikula**  
Program Liaison Officer



**Lucy Moysey**  
Coordinator Assoc Learn  
Svc



**Stefania Pieke**  
Customer Service  
Representative



**John Reed**  
Coordinator, Motorcycle  
Program



**Irene Van Vliet**  
Sales & Marketing  
Coordinator



**Sahodra Vogel**  
Sales Assistant